

# Future Facility Vision

Eastland CUSD #308

# Recommendation

The Eastland administrative team is recommending that the Board of Education take the steps necessary to reduce from 3 attendance centers to 2 attendance centers, beginning in the 2013-14 school year.

# Rationale

Reducing from 3 attendance centers to 2 would . . .

- make available resources that can be used for instructional costs
- provide opportunities to staff programs more efficiently
- ensure all students will attend buildings that are bright and modern, with appropriate air exchange
- reduce the number of shared staff / travel between buildings
- improve articulation of curriculum / instruction
- improve instructional leadership
- allow for the implementation of 1:1 in the grades 7-8
- avoid costs necessary to upgrade / maintain EES

# Parameters

- State funding is declining
- Local funding is declining
- Enrollment is declining
- As a % of the overall district budget, Eastland spends more to operate its facilities
- Eastland Elementary is in need of upgrades
  - Electrical
  - Plumbing
  - HVAC
  - Lighting

# Outcomes

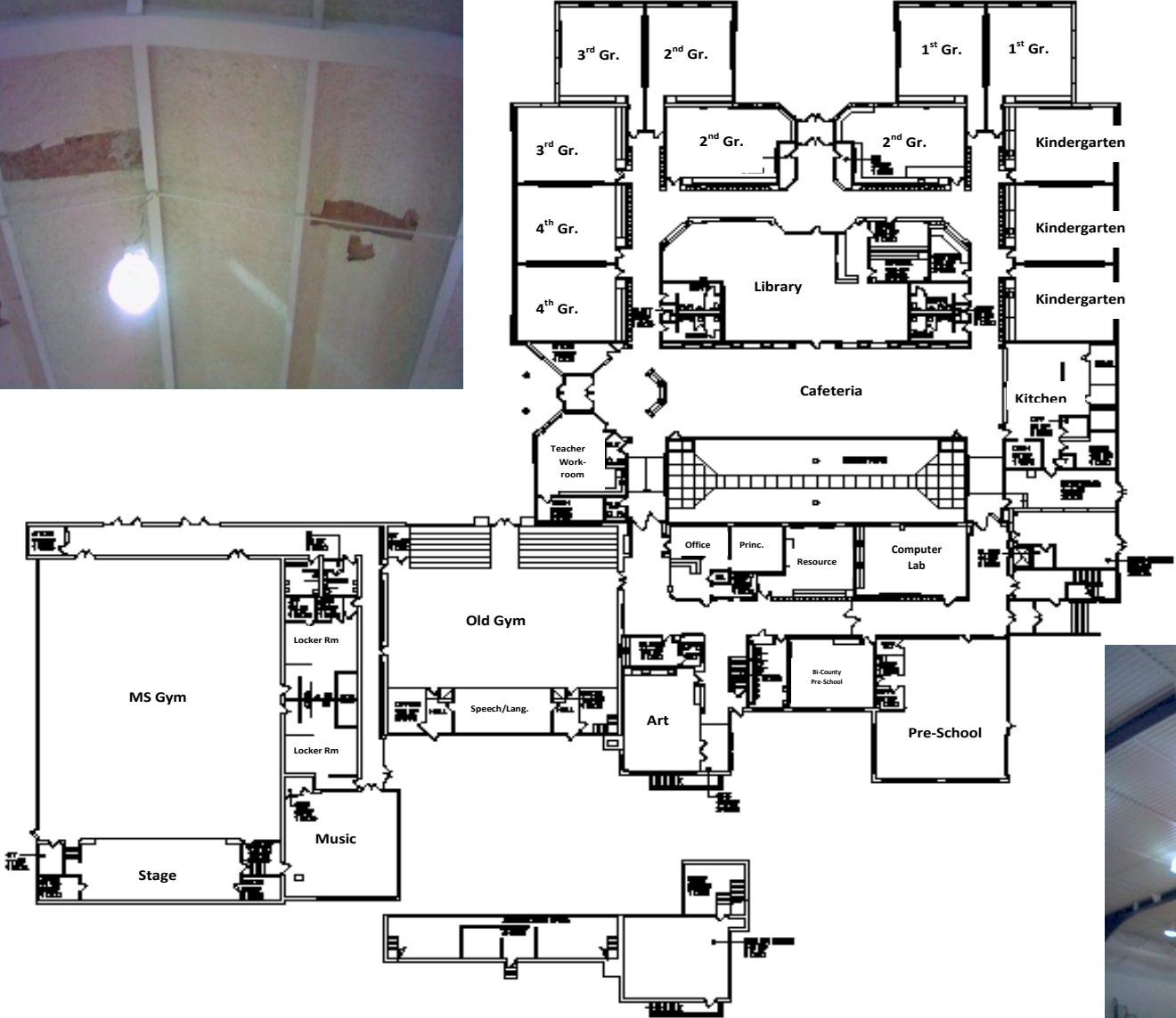
- The % of the overall Eastland budget for Operations and Maintenance of buildings will be reduced to a level comparable to similar districts in the region / state.
- Costs for reimbursement for intra-district travel will be reduced by 50% or more.

## Regional Comparisons

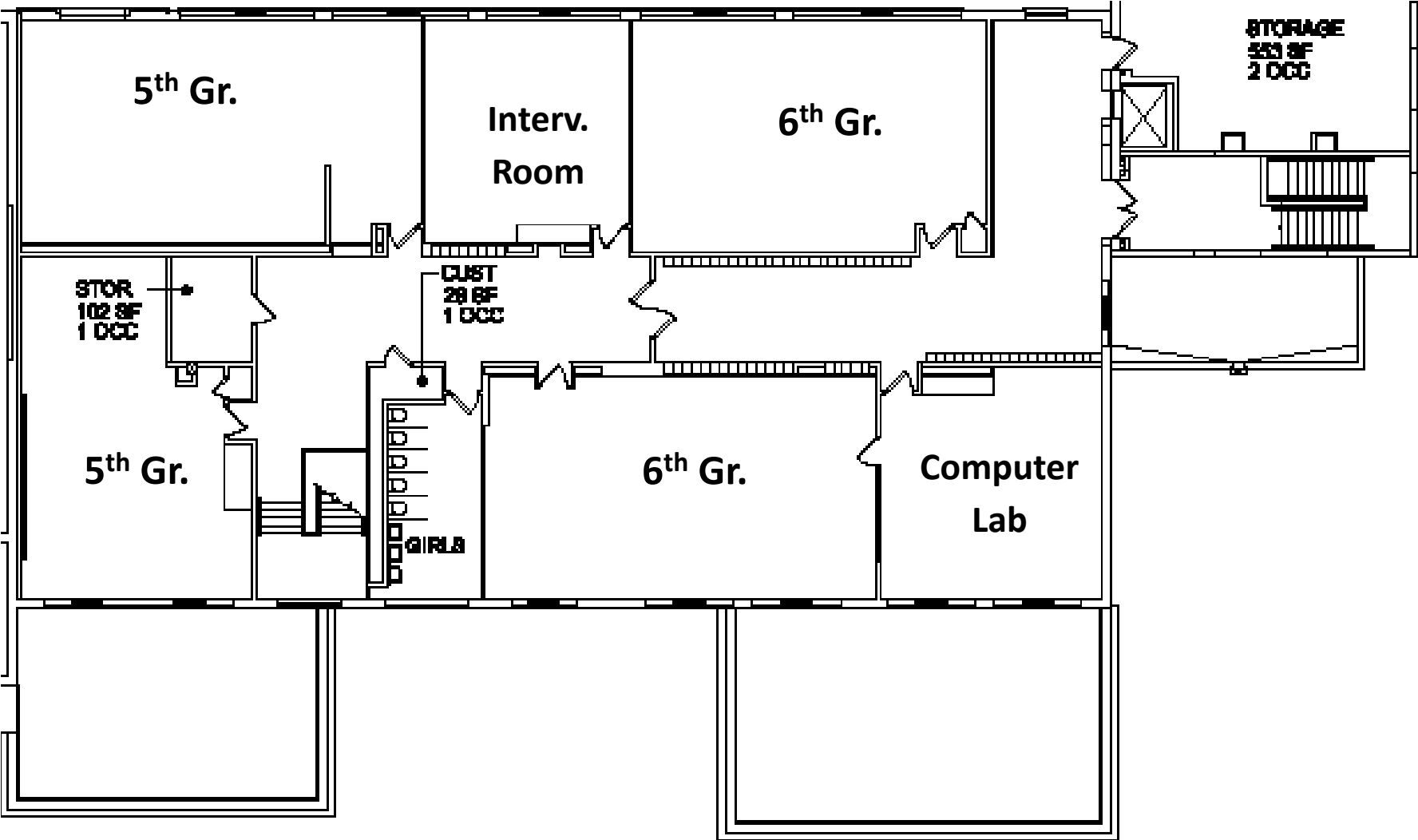
### Expenditures for Operations/Maintenance of Buildings

	% of Budget for O/M	Annual Expenditures for O/M
State	6.0%	
Eastland	9.2%	\$ 769,480.00
Pearl City	6.3%	\$ 331,997.00
Chadwick-Milledgeville	8.0%	\$ 372,300.00
West Carroll	5.6%	\$ 656,198.00
Forreston	4.4%	\$ 421,209.00
Polo	8.2%	\$ 521,851.00

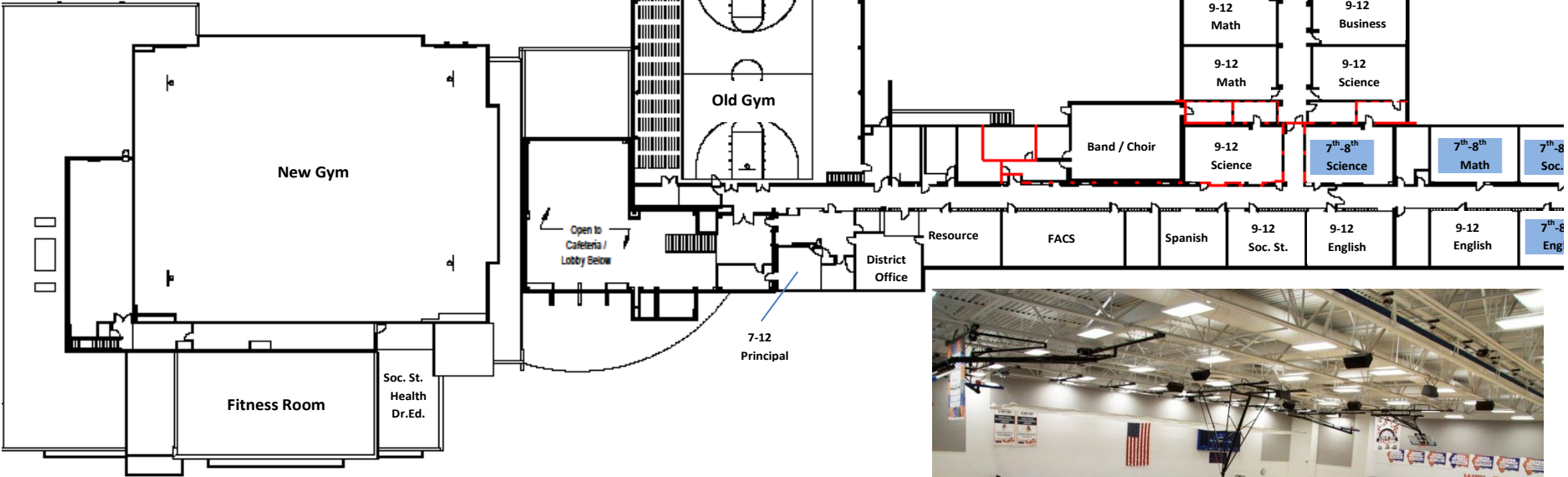
# Eastland Elementary – PK-6 Shannon



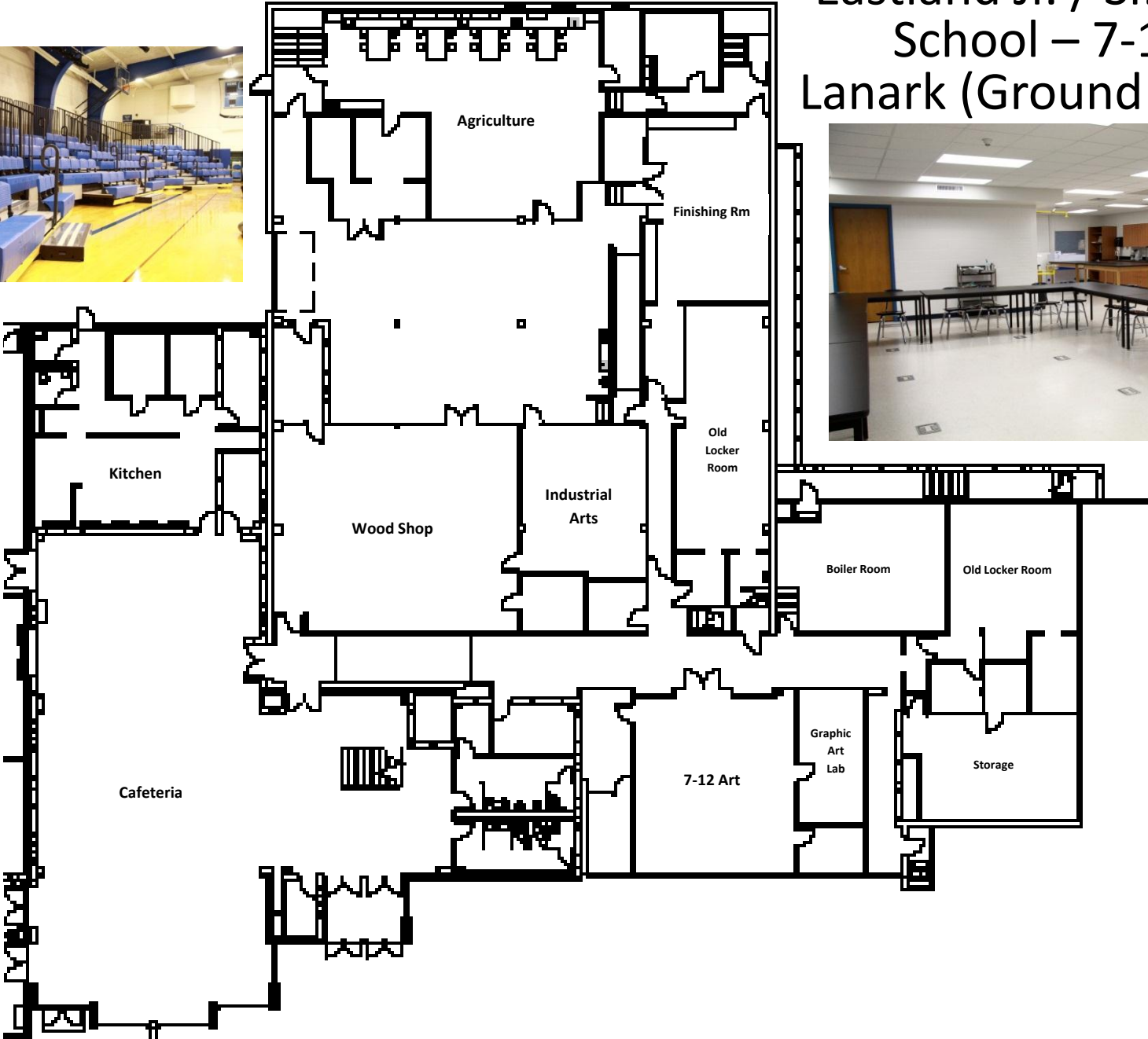
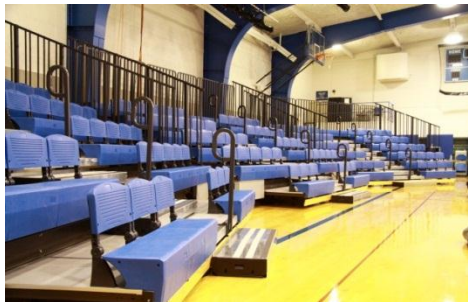
# Eastland Elementary – PK-6 Shannon (2<sup>nd</sup> Floor)



# Eastland Jr. / Sr. High School – 7-12 Lanark



# Eastland Jr. / Sr. High School – 7-12 Lanark (Ground Level)



# Eastland Jr./Sr. High School Daily Schedule

High School			
Time		Min.	Period
8:10	8:52	42	1
8:52	8:55	3	Passing
8:55	9:37	42	2
9:37	9:40	3	Passing
9:40	10:22	42	3
10:22	10:25	3	Passing
10:25	11:07	42	4
11:07	11:10	3	Passing
11:10	12:22	72	5
11:10	11:37	30	1st Lunch
11:52	12:22	30	2nd Lunch
12:22	12:25	3	Passing
12:25	1:07	42	6
1:07	1:10	3	Passing
1:10	1:52	42	7
1:52	1:55	3	Passing
1:55	2:37	42	8
2:37	2:40	3	Passing
2:40	3:10	30	Llab

Junior High			
Time		Min.	Period
8:10	8:40	30	Homeroom
8:40	8:43	3	Passing
8:43	9:25	42	1
9:25	9:28	3	Passing
9:28	10:10	42	2
10:10	10:13	3	Passing
10:13	10:55	42	3
10:55	10:58	3	Passing
10:58	11:40	42	4
11:40	11:43	3	Passing
11:43	12:28	45	5
12:28	12:58	30	Lunch
12:58	1:40	42	6
1:40	1:43	3	Passing
1:43	2:25	42	7
2:25	2:28	3	Passing
2:28	3:10	42	8

# Student Drop-off (a.m.)

## Elementary

- Parents will drop off their students at the North entrance to the new addition.
- Route buses will drop off students at the North entrance to the new addition.
- An elementary aide will supervise the students until the shuttle arrives and will ride the shuttle bus with the students to Shannon.

## Jr. High School

- Parents will drop off their students at the South entrance to the building.
- Route buses will drop off students at the South entrance to the building.
- Students who intend to eat breakfast will take their things to their lockers and then report directly to the cafeteria where they will sit in the Jr. High designated area. Students who will not eat breakfast will report directly to the Media Center where they will be supervised by an aide.

## Sr. High School

- Parents will drop off their students at the main entrance to the building.
- Route buses will drop off students at the main entrance to the building .
- Students will stay in the cafeteria in the Sr. High designated area or will report to their lockers. Students will not be allowed in the Jr. High section or in the Media Center.

# Student Pick-up (p.m.)

## Elementary

- Shuttle buses will drop students off at the North entrance of the new addition where students will be placed on the appropriate route buses or parents may pick them up.

## Jr. High School

- Shuttle students (and students involved in after-school athletics) will be picked up at the South entrance immediately after school.
- Students who walk or ride route buses will be held in their 8<sup>th</sup> hour classroom until 3:15 p.m. and will then be dismissed to leave the building or wait in the cafeteria for the route buses and will be supervised by staff members.

## Sr. High School

- Shuttle students will be picked up at the main entrance to the building and all students will be released at 3:10 p.m.
- Students who ride route buses will report to the cafeteria and will be supervised by staff members.

# PreK-6 Student Drop-off (a.m.)

## Elementary

- K-2 students will enter the North entrance of the school
- 3-6<sup>th</sup> students will enter through the main entrance of the school
- Pre-K students will enter the East entrance of the school
- Aides will supervise shuttles, playground, and cafeteria when students arrive

# PreK–6 Student Pick-up (p.m.)

## Elementary

- Lanark shuttle students will leave the building through the same entrances as in the a.m. to load their buses. PreK-2 teachers will walk students to their buses.
- Shannon route students will go to the playground area after school (or cafeteria in inclement weather).
- Shannon route students will be supervised by two teachers on a rotating basis.

# Feedback / Input

## January 30<sup>th</sup> School Improvement Planning Feedback Form

### 2-Facility Plan:

What elements of the Vision do you support, and why?

With what elements of the Vision do you disagree?  
Why?

What specific changes would you recommend? Why?